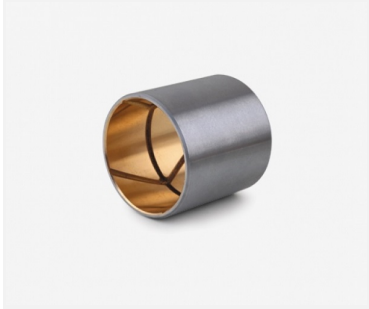


Datasheet TE72



TE72 is a bimetallic bearing with steel backing and sintered CuPb24Sn4 as lining. This bearing type has quite good performance in anti-wear and heavy load capacity. TE72 is recommended for medium speed and medium load. With a soft alloy plated on the bushing surface and with oil lubrication, it can be used in a high-speed internal combustion engine as well as a connecting rod.

Application

Suits for occasions with medium speed, medium load, with oil lubrication

Material

Steel with a sintered alloy.

Availability

	Value	Unit
Inside diameter	on request	
Outside diameter	on request	
Flange diameter	on request	
Flange height	on request	
Total length	on request	

TE72 - Specifications

Physical properties

	Test standard	Value	Unit
--	---------------	-------	------

Mechanical properties

	Test standard	Value	Unit
Compressive strength static		on request	
Module of elasticity - Youngs modulus		on request	
Tensile strength		150	MPa
Shear strength		on request	
Impact strength		on request	
Hardness		45~70	Rockwell HB
Dynamic load capacity		38	MPa
Speed limit v max dry		10	m/s

Thermal properties

	Test standard	Value	Unit
Min. working temperature		on request	
Max. working temperature		170	°C
Intermittent working temperature		on request	

Friction properties

	Test standard	Value	Unit
Coefficient of friction dynamic	oil	0,06-0,16	[-]
Max. sliding speed		on request	
Max. Pv-load dry		on request	
Max. Pv-load oil lubricated		10	MPa*m/s
Max. Pv-load on regular greased		2,8	MPa*m/s

Electrical properties

	Test standard	Value	Unit
--	---------------	-------	------